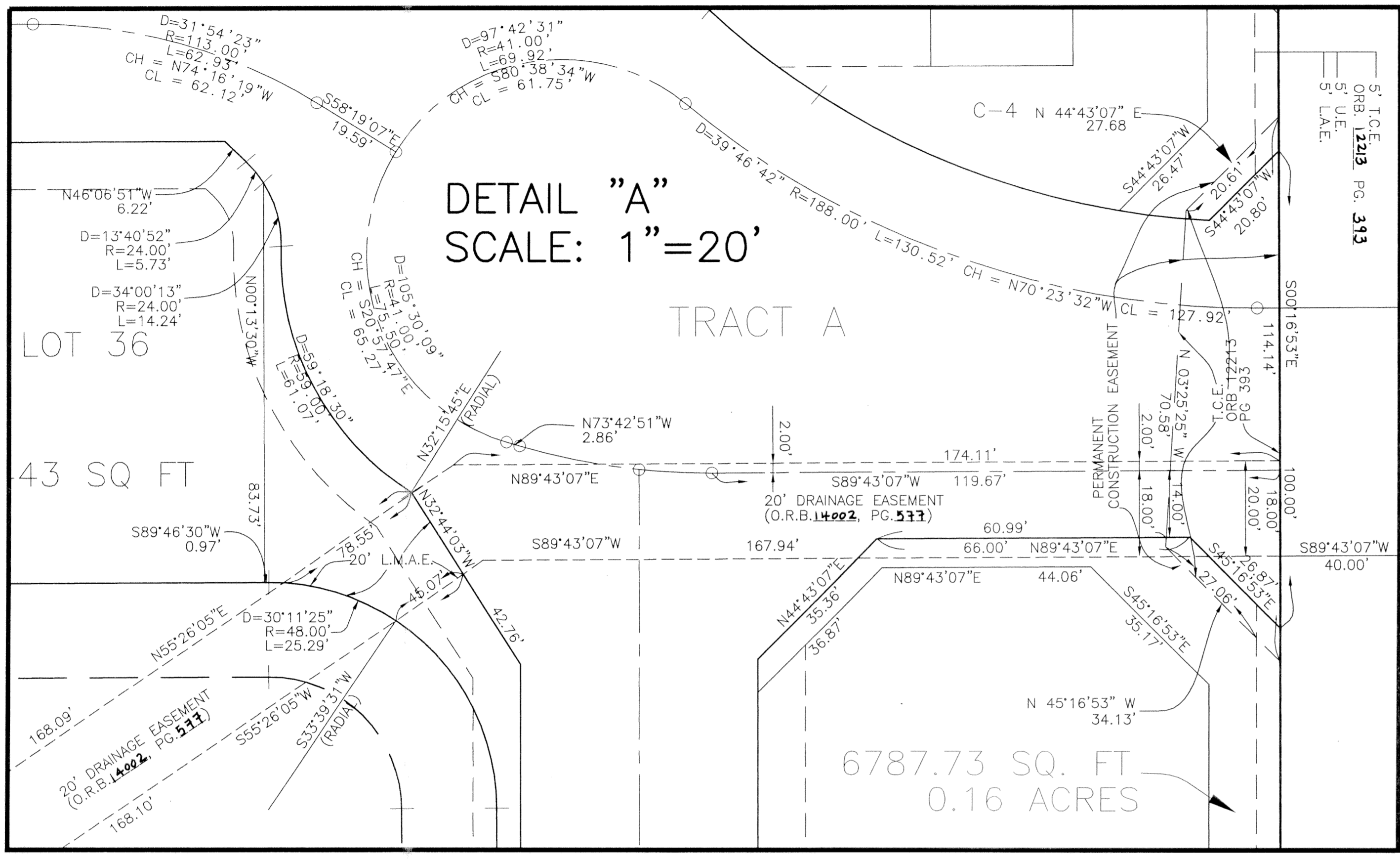


JONATHAN'S CREEK

A PORTION OF THE SOUTH ONE-HALF (S1/2) OF THE NORTHEAST ONE-QUARTER (NE1/4) OF THE NORTHEAST ONE-QUARTER (NE1/4) SECTION 24, TOWNSHIP 45 SOUTH, RANGE 42 EAST, PALM BEACH COUNTY, FLORIDA.

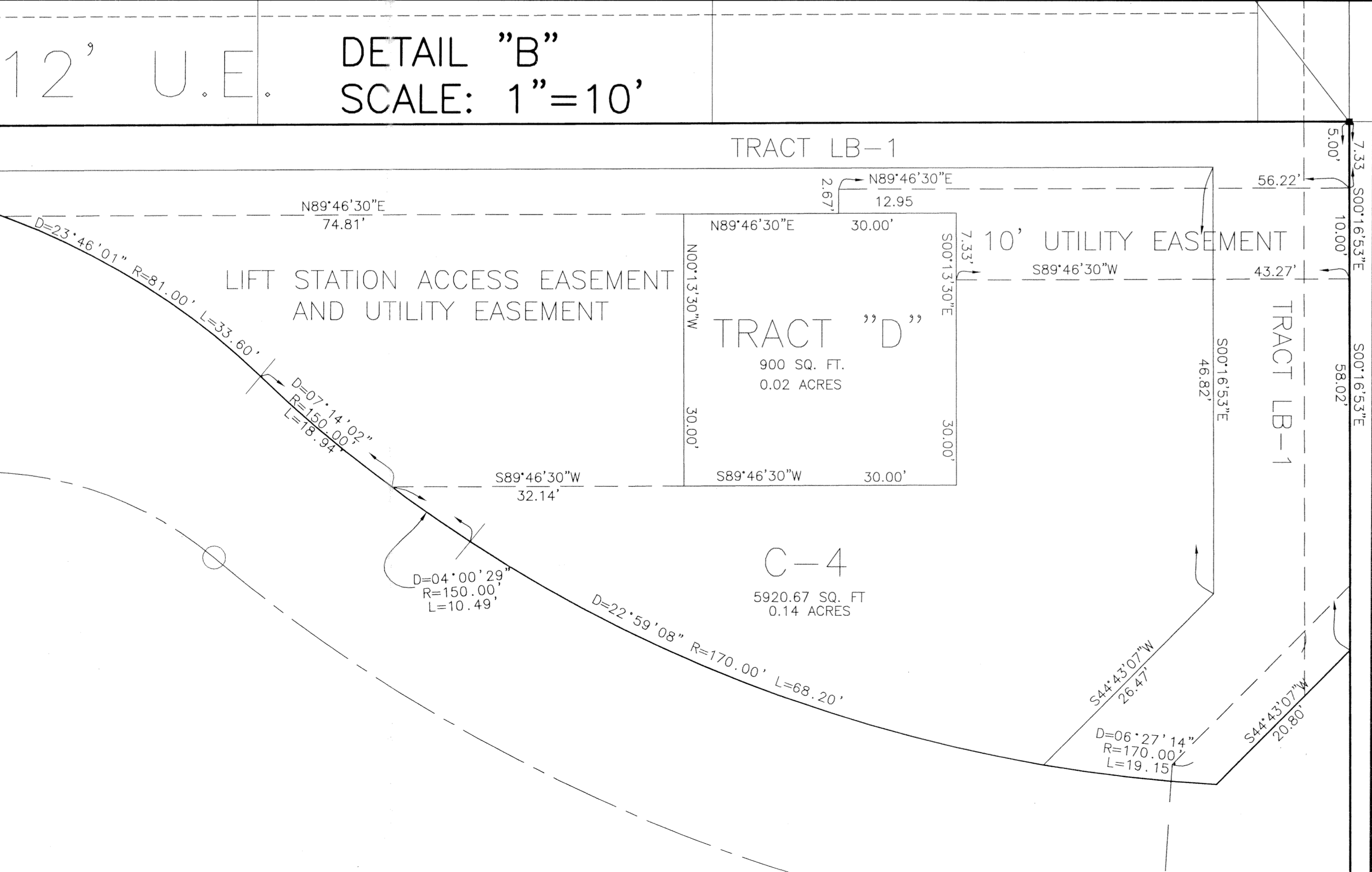
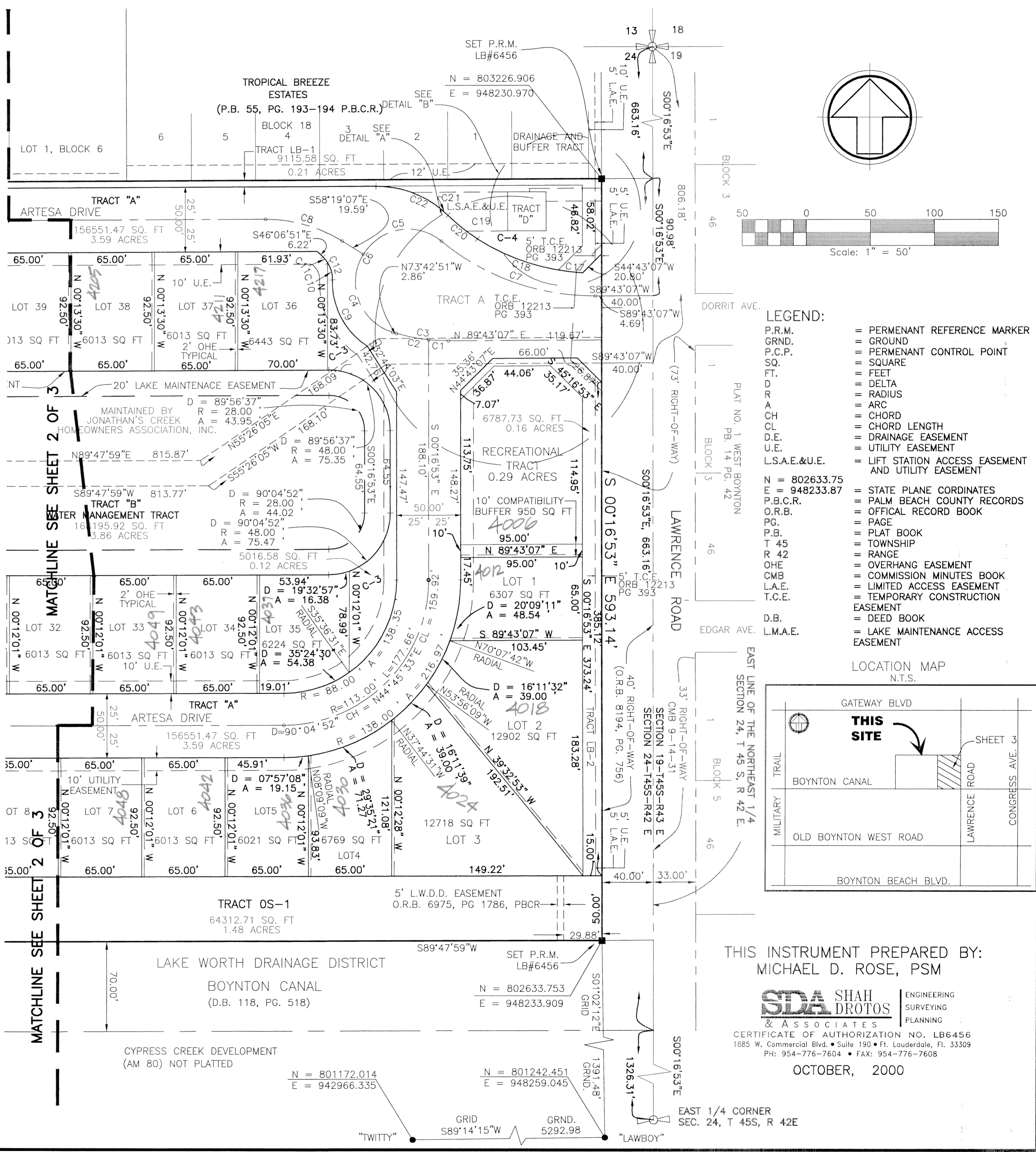
STATE OF FLORIDA
 COUNTY OF PALM BEACH
 SS
 This Plat was filed for record at _____ M., this _____ day of _____, 2000, and duly recorded in Plat Book No. _____ on Pages _____ and _____.
 DOROTHY H. WILKEN, CLERK
 BY: _____ DC

NUMBER	DELTA ANGLE	RADIUS	ARC LENGTH	CHORD BEARING	CHORD LENGTH
C9	59°18'30"	59.00	61.07	N28°05'00"W	58.38
C10	34°00'13"	24.00	14.24	N15°25'52"W	14.04
C11	13°40'52"	24.00	5.73	N39°16'25"W	5.72
C12	47°41'06"	24.00	19.97	N22°16'18"W	19.40
C17	06°27'14"	170.00	19.15	N83°40'34"W	19.14
C18	29°26'22"	170.00	87.35	N72°10'59"W	86.39
C19	04°00'29"	150.00	10.49	N55°14'04"W	10.49
C20	11°14'31"	150.00	29.43	N51°50'33"W	29.38
C21	23°46'01"	81.00	33.60	N57°52'47"W	33.36
C22	44°00'13"	81.00	62.21	N68°13'24"W	60.69



NUMBER	DELTA ANGLE	RADIUS	ARC LENGTH	CHORD BEARING	CHORD LENGTH
C1	06°11'57"	142.00	15.36	N87°10'55"W	15.36
C2	10°22'06"	142.00	25.70	N78°53'53"W	25.66
C3	16°34'02"	142.00	41.06	N81°59'52"W	40.92
C4	104°42'55"	41.00	74.93	N21°21'23"W	64.93
C5	98°29'45"	41.00	70.48	N80°14'57"E	62.12
C6	20°31'24"	41.00	145.41	N27°53'29"E	80.32
C7	39°46'42"	188.00	130.52	S70°23'32"E	127.92
C8	31°54'23"	113.00	62.93	N74°16'19"W	62.12

MATCHLINE SEE SHEET 2 OF 3



SUBDIVISION JONATHAN'S CREEK
 BOOK 96
 FLOOD ZONE B
 QUAD # 35
 SE 00-725
 TAZ 93B
 PUB NAME 334736

THIS INSTRUMENT PREPARED BY:
 MICHAEL D. ROSE, PSM
SDA SHAH DROTOS & ASSOCIATES
 ENGINEERING SURVEYING & PLANNING
 CERTIFICATE OF AUTHORIZATION NO. LB6456
 1885 W. Commercial Blvd. • Suite 150 • Ft. Lauderdale, FL 33309
 PH: 954-776-7604 • FAX: 954-776-7608
 OCTOBER, 2000